



## HYDRAULIC DIDACTIC TRAINING BENCH OPEN CIRCUIT - SHCO-v2



The Training Bench SHCO is a **major evolution** from the Traditional Panel type bench, which can reply an educational objective **in both industrial & mobile hydraulics**.

This material differs from traditional panel type as **an innovative training bench both in design and presentation**: The bench is not built as a model or a simulator but **like a real Hydraulic Power Pack** as the student will find it later in the industry.

The aim of this design is not only to plug the components onto the bench as traditional panel type training bench does, but also to **put students in real hydraulic circuits situation**.

With the bench SHCO Students can **do the hydraulic exercises in front but also around the bench and work:**

- on a real hydraulic schematic,
- on the assembly and disassembly of industrial components Cetop 3,
- the identification of the kinematic chain with the physical layout of the components,
- only with well-known industrial component that he will find later in the industry : Eaton-Vickers Cetop components, Bosch Rexroth pump, ABB electrical motor, Danfoss motor, Danfoss PVG 32 for the proportional version...

Nowadays, companies need well trained employees rapidly effective on their works. With SHCO Bench, the students are rapidly efficient either for Industrial or Mobile Hydraulic.

For a new generation of demanding students, the SHCO is a great tool for the pedagogical team. We work hard to focus on the security aspect with **dual hydraulic safety design** on our bench.



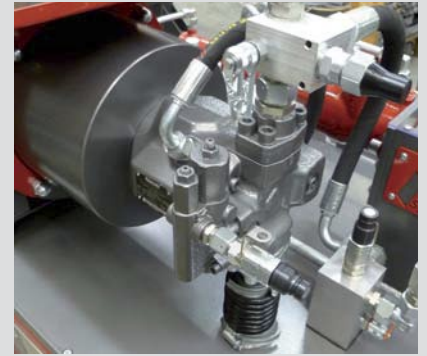
## STANDARD TRAINING EQUIPMENT



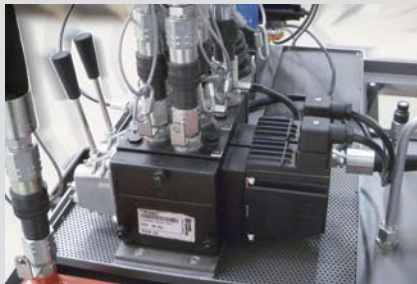
Block CETOP 3  
function for on-off controls



Store of hydraulic components



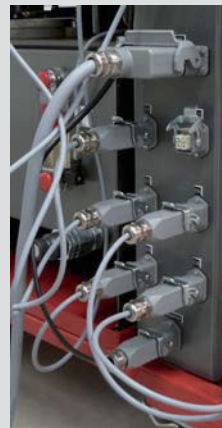
Axial pistons pump  
with variable cylinder capacity  
with constant pressure and  
"Load Sensing" regulatory system



PVG 32 valve for  
proportional control of motors  
and cylinders



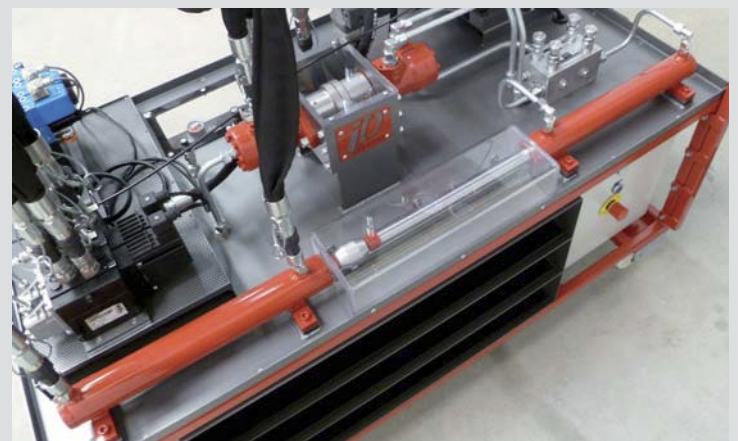
3-Axis proportional  
manipulation for  
PVG 32 control



Electric connection  
by harting plug



Load regulation block:  
Cylinders & motors



Hydraulic motor and double acting cylinders