

Lucas Nülle is proudly and exclusively represented in Australia and New Zealand by



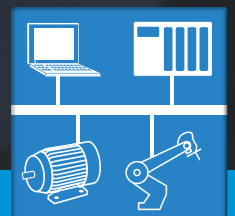
**Training Systems Australia**  
First in Vocational Training Equipment  
*A Division of Pullman Learning Group*

300 Centre Road, Bentleigh, Victoria, 3204  
p: +613 9557 7993 e: info@trainingsystemsaustralia.com.au



# CYBER-PHYSICAL SYSTEM

People, Machinery and Products in the Smart Factory



# CYBER-PHYSICAL CONVEYOR BELT SYSTEM

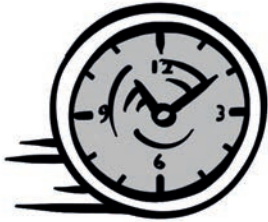


One unit: Conveyor belt, electrical & mechanical components with integrated control unit

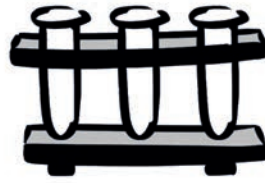


For everyone: From programming novices to professional users | providing the fundamentals for Industry 4.0 (smart factories)

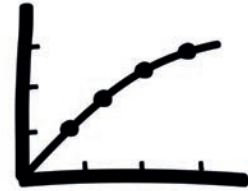
A CPS (cyber-physical system) describes a module comprised of three components, which is absolutely necessary to operate production systems using Industry 4.0 technology. Consequently, it forms the foundation for a modern production line.



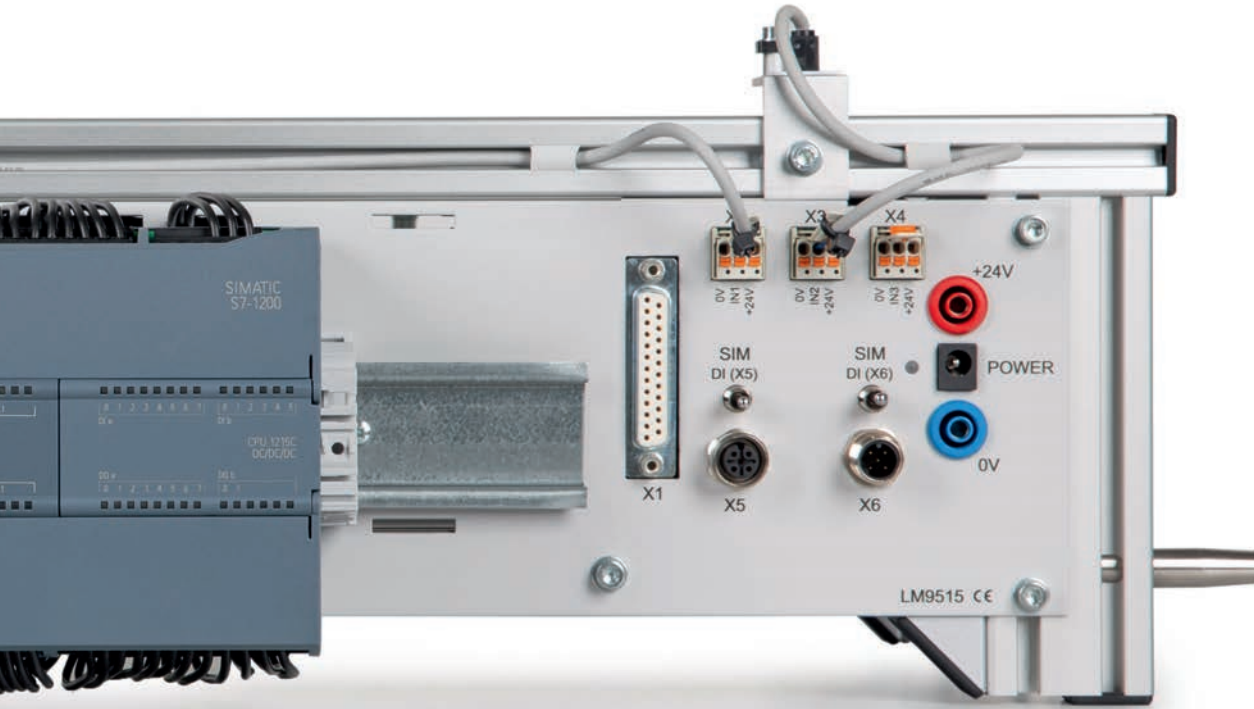
Brief set-up and configuration times:  
leads to fast initial start-up time



Optimal conditions for the  
laboratory



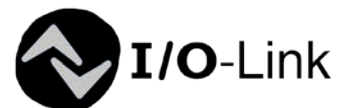
Recording and evaluation of  
performance data



Modern communication:  
PROFINET for networking



Information transfer to the ERP and  
MES in the cloud



Extendible with I/O link technology



The three components of a CPS are:



Mechanical & electronic (mechanical set-up with sensors and actuators)



microcontrollers

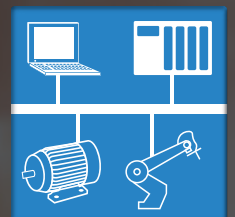


interface to the Internet



# CYBER-PHYSICAL SYSTEM

People, Machinery and Products in the  
Smart Factory



**Training Systems Australia**  
First in Vocational Training Equipment  
*A Division of Pullman Learning Group*

**p** +61 3 9557 7993  
**e** [info@trainingsystemsaustralia.com.au](mailto:info@trainingsystemsaustralia.com.au)  
**w** [www.trainingsystemsaustralia.com.au](http://www.trainingsystemsaustralia.com.au)  
**a** 300 Centre Road, Bentleigh, VIC, 3204